

## Load cells

### S-types

60050



Designed for small industrial weighing tanks and hoppers

Excellent linearity and precision

300% overload capability

Made of stainless steel

Watertight protection for use in harsh environments

### TECHNICAL CHARACTERISTICS 60050

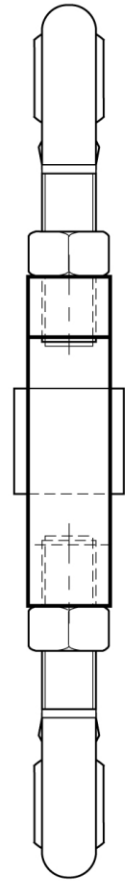
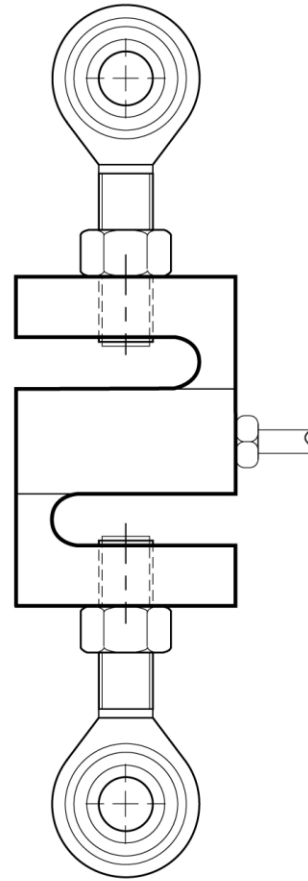
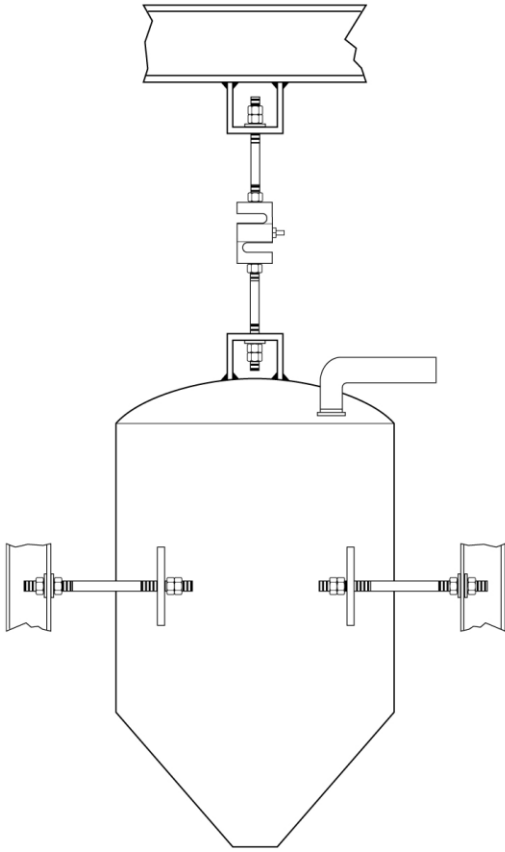
|                                     |   |
|-------------------------------------|---|
| Rated load (R.L.):                  | 50, 100, 150, 250, 500 kg; 1, 2.5, 5, 10 t                |
| Combined error:                     | < ±0.02% of R.O.  |
| Repeatability:                      | < ±0.01% of R.O./5°K                                      |
| Creep (20 minutes):                 | ±0.017% of R.L.   |
| Safe overload:                      | 150% of R.L.  |
| Maximum overload:                   | 300 % of R.L.   |
| Recommended input:                  | 5÷15 Vdc/Vac  |
| Input resistance:                   | 343÷450 Ohm   |
| Output resistance:                  | 349÷355 Ohm   |
| Insulation resistance:              | > 1000 M Ohm  |
| Rated output (R.O.):                | 3 mV/V  |
| Zero balance:                       | < ±1% of R.O.   |
| Temperature range:                  | -18 ÷ +65°C   |
| Compensated temperature range:      | -10 ÷ +40°C   |
| Temperature effect on zero balance: | < ±0.0010% of R.O./°F                                     |
| Temperature effect on output:       | < ±0.0007% on output/°F                                   |
| Max load deflection:                | 0.10÷0.15 mm  |
| Degree of protection:               | IP67  |
| Material:                           | Stainless steel   |
| Electrical connection:              | 4 conductors shielded cable; length 6 m                   |
| Precision class:                    | 3000 n. OIML only for carrying capacity from 50 to 2500kg |



## Load cells

S-types

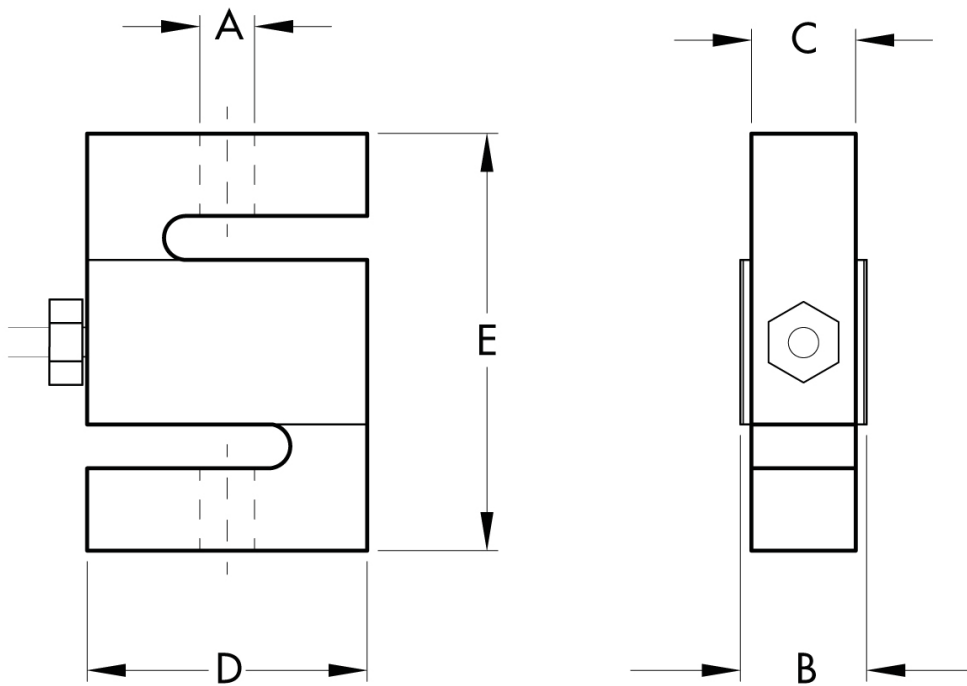
60050



## Load cells

S-types

60050



### Electrical Connections

|             |              |
|-------------|--------------|
| +Excitation | Red          |
| -Excitation | Black        |
| +Signal     | Green        |
| -Signal     | White        |
| Shield      | Cable Shield |

| CAPACITY     | A           | B    | C    | D     | E     |
|--------------|-------------|------|------|-------|-------|
| 50-100 kg    | M8x1.25-6H  | 16.5 | 12.7 | 50.8  | 63.5  |
| 250 kg - 1 t | M12x1.75-6H | 25.4 | 19.1 | 50.8  | 76    |
| 2.5 t        | M20x1.5-6H  | 31.8 | 25.4 | 76.2  | 108   |
| 5 t          | M20x1.5-6H  | 31.8 | 25.4 | 88.9  | 120.7 |
| 10 t         | M20x2.0-6H  | 57.2 | 50.8 | 127.0 | 177.8 |