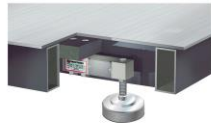
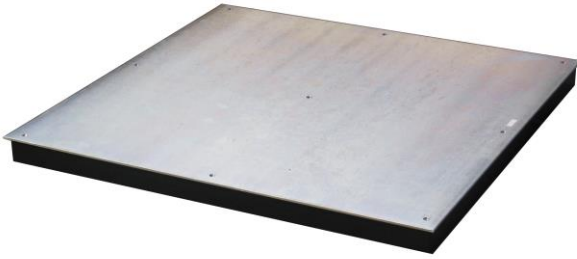


## PLATFORMS

Four cells

PQ



Structure in painted steel

Painted steel screwed on load floor (5 or 6 mm thick)

Available on request in stainless steel

OIML certified Shear beam load cells, nickel-plated steel with IP67 (option stainless steel IP68)

Aluminum junction box with protection IP67

Support 4-jointed feet, and height-adjustable in nickel-plated steel or stainless steel

High-resolution version from 10000 to 20000 divisions for internal factory use only

### TECHNICAL CHARACTERISTICS PQ

Trasducer input voltage:	3 ÷ 15 Vcc
Rated load (R.L.):	300 ÷ 6000 Kg
Rated output (R.O.):	3 mV/V
Combined error:	0.03% R.O.
Safe overload:	150% of R.L.

Structure in painted steel

Possibility of EC approval-M3000e

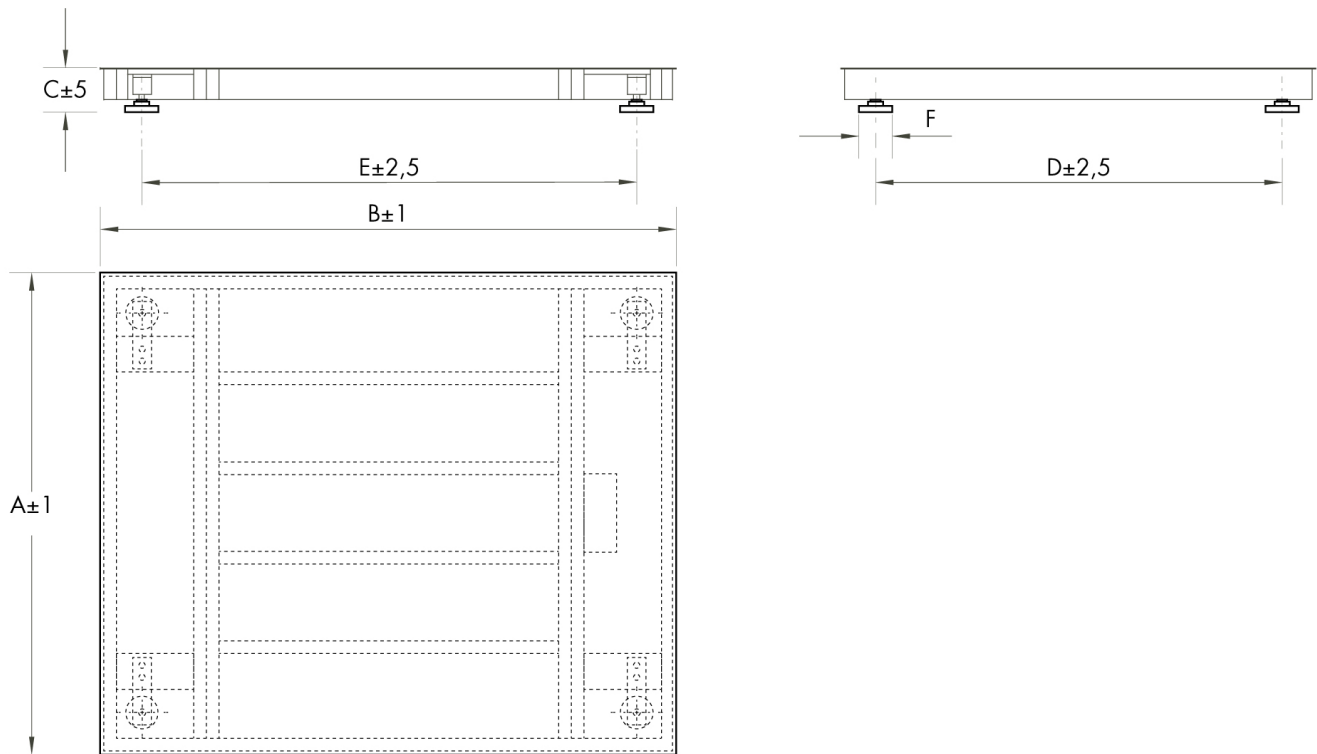
Special versions available on request



## PLATFORMS

Four cells

PQ



TYPE	CAPACITY	A	B	C	D	E	F
PQ0	300-600	800	800	100	600	600	60
PQ1	300-1500	1000	1000	100	800	800	60
PQ2	300-3000	1000	1250	120	800	1050	60
PQ3	300-3000	1250	1250	120	1050	1050	60
PQ4	600-3000	1250	1500	120	1050	1300	60
PQ5	600-3000	1500	1500	120	1300	1300	60
PQ6	600-3000	1250	2000	120	1050	1800	60
PQ7	600-6000	1500	2000	150	1300	1800	60
PQ8	1500-6000	1500	2500	150	1300	2300	60
PQ9	1500-6000	2000	2000	150	1800	1800	60
PQ10	3000-6000	2000	2500	150	1800	2300	60

## PLATFORMS

Four cells

PQ

