

## Load cells

### Double ended shear beam

VC3500



Stainless steel load sensor

Optional 4 - 20mA output

Low profile

Integral lift off prevention

High durability PU mud & chemical resistant cable

Fully welded construction IP68 / IP69K

Also available with intrinsically safe ATEX certification and a high temperature variant

End use industries include cement, minerals, chemicals, plastics, pharmaceuticals, paint, food, biomass and offshore applications

#### TECHNICAL CHARACTERISTICS VC3500

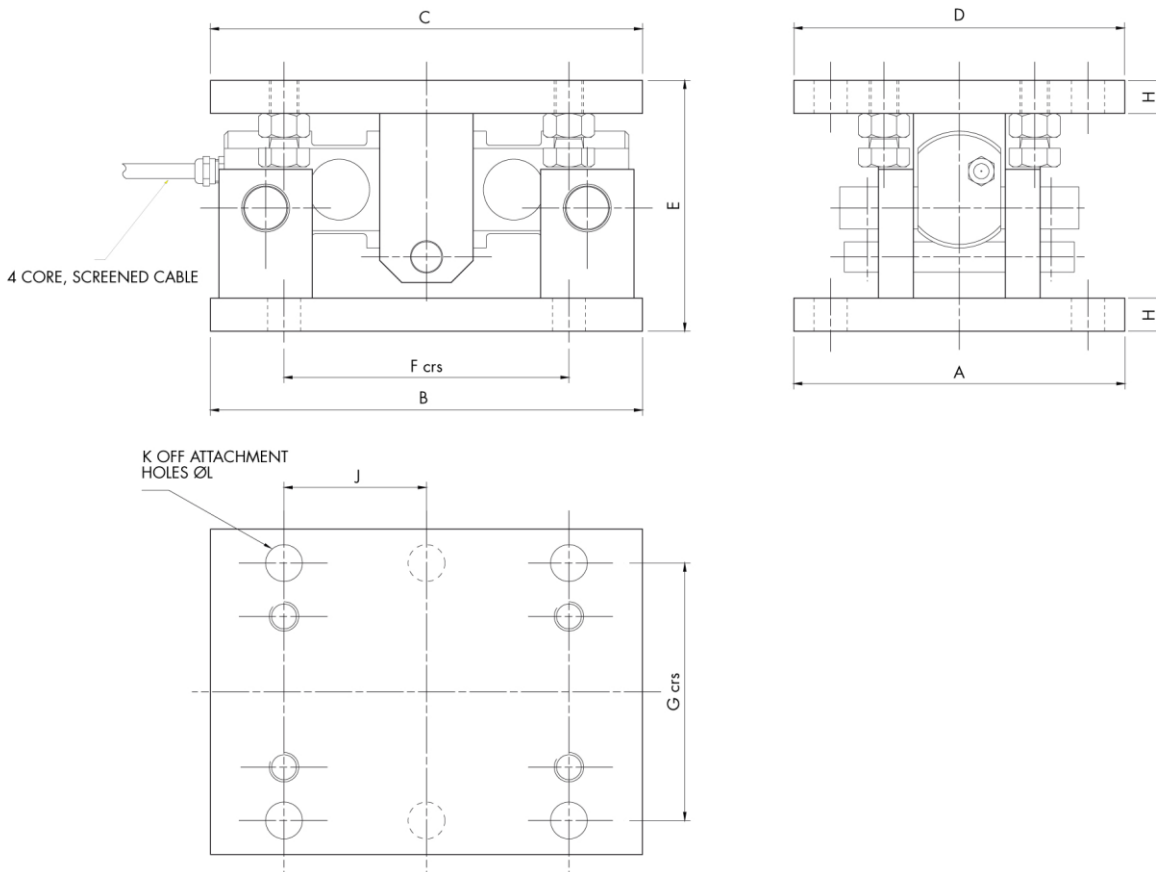
Full Load Output:	2.0 (+/- 0.25%) mV/V
Excitation - Recommended:	10 V
Excitation - Maximum:	18 V.
Combined Error:	< +/- 0.03 %
Repeatability:	< +/- 0.015 %
Input Resistance:	785 +/- 20 Ohms.
Output Resistance:	705 +/- 5 Ohms
Operational Temperature Range:	-50 to +80 °C
Compensated Temperature Range:	-10 to +40 °C
Environmental Protection:	IP68/IP69K
Cable Length:	20 m
Cable Material:	Polyurethane
Insulation:	>500 at 100Vdc M Ohms



## Load cells

Double ended shear beam

VC3500



CAPACITY	A	B	C	D	E	F crs	G crs	H	J crs	K No	Ø L
2-20t	180	235	235	180	137	155	140	20	-	8	18
30-50t	250	285	250	220	210	175	175	25	-	8	22
75t	250	330	330	250	250	200	180	25	100	12	22
100t	350	440	440	340	275	300	235	30	150	12	26
150-200t	350	440	440	350	325	310	285	30	155	12	32